



# SARIGÜLLER Limited

SARIGÜLLER MÜH. İNŞ. ve YAPI ELM. SAN. TİC. LTD. ŞTİ.  
EĞİTİM MAH. KASAP İSMAIL SOK. AVRASYA İŞ M. KAT:1 D:16 HASANPAŞA/İSTANBUL  
TEL: 0 216 337 43 10 - 0 216 337 43 11 FAX: 0 216 337 43 09

KONU/SUBJECT:

GARAJ TİPİ YAĞ AYIRICI  
GARAGE TYPE  
OIL-SEPERATORS  
S900-C SERİSİ

SAYFA NO:  
PAGE NO:

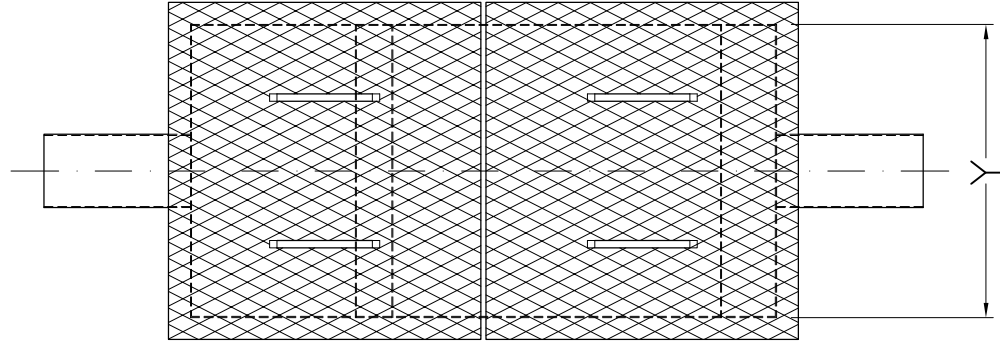
88

SCALE:  
ÖLÇEK:

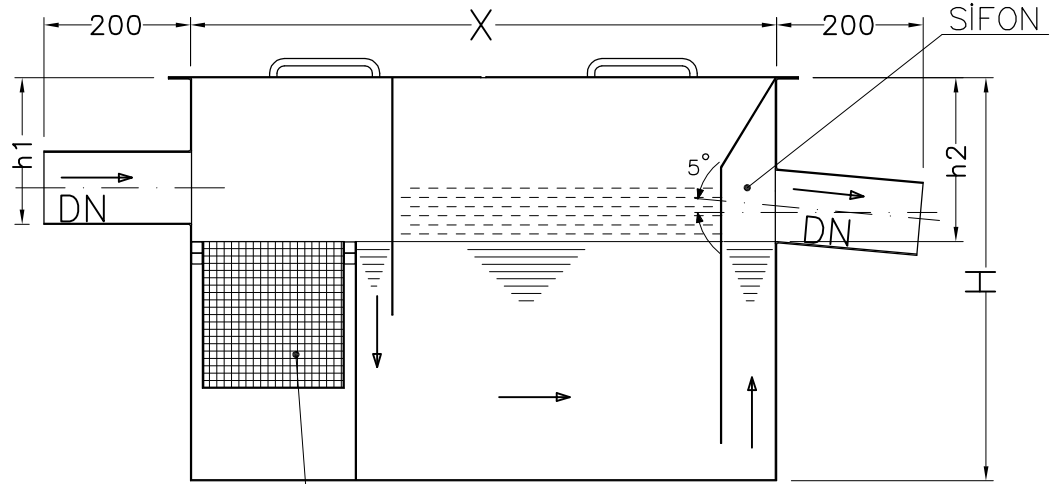
1/10

RESİM NO:  
DWG. NO:

S900-C.DWG



PLAN



KESİT/SECTION

3 ŞEKİLDE ÜRETİLMEKTEDİR

- 1-SİYAH SAÇ + EPOKSİ BOYALI
- 2-SİYAH SAÇ + SICAK DALDIRMA GALVANİZLİ
- 3-316L PASLANMAZ SAÇTAN

PRODUCED IN 3 WAYS

- 1-SHEET METAL + EPOXY PAINTED
- 2-SHEET METAL + HOT DIP GALVANIZED
- 3-316L STAINLESS SHEET METAL

| KESİT KALINLIĞI<br>WALL THICKNESS<br>mm. | KAPASİTE<br>CAPACITY<br>L/sn. | DN    | X    | Y   | H    | h1  | h2  |  |
|--|-------------------------------|-------|------|-----|------|-----|-----|--|
| DKP 3.0mm<br>316L 1.5mm                  | 1.0                           | DN100 | 800  | 450 | 800  | 200 | 225 |  |
|  | 1.5                           | DN100 | 800  | 600 | 900  | 200 | 225 |  |
|  | 2.0                           | DN100 | 900  | 700 | 900  | 200 | 225 |  |
|  | 3.0                           | DN100 | 1200 | 850 | 900  | 200 | 225 |  |
|  | 4.0                           | DN125 | 1500 | 850 | 900  | 200 | 225 |  |
| DKP 4.0mm<br>316L 2.0mm                  | 5.0                           | DN125 | 1500 | 900 | 1000 | 200 | 225 |  |
|  | 6.0                           | DN150 | 1750 | 900 | 1000 | 200 | 225 |  |