



SARIGÜLLER
Limited

SARIGÜLLER MÜH. İNŞ. ve YAPI ELM. SAN. TİC. LTD. ŞTİ.
EĞİTİM MAH. KASAP İSMAIL SOK. AVRASYA İŞ M. KAT:1 D:16 HASANPAŞA/İSTANBUL
TEL: 0 216 337 43 10 - 0 216 337 43 11 FAX: 0 216 337 43 09

KONU/SUBJECT:
BENZİN AYIRICI

BENZINE-SEPERATORS
S900-D SERİSİ

SAYFA NO:
PAGE NO:

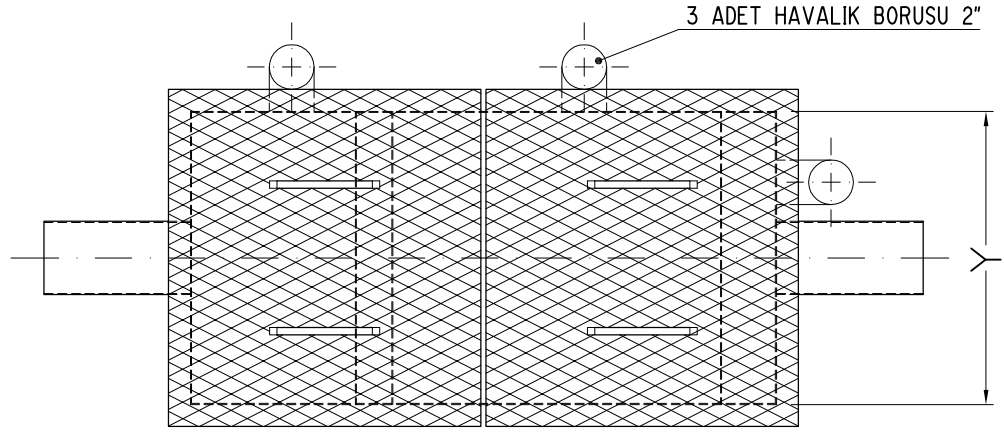
89

SCALE:
ÖLÇEK:

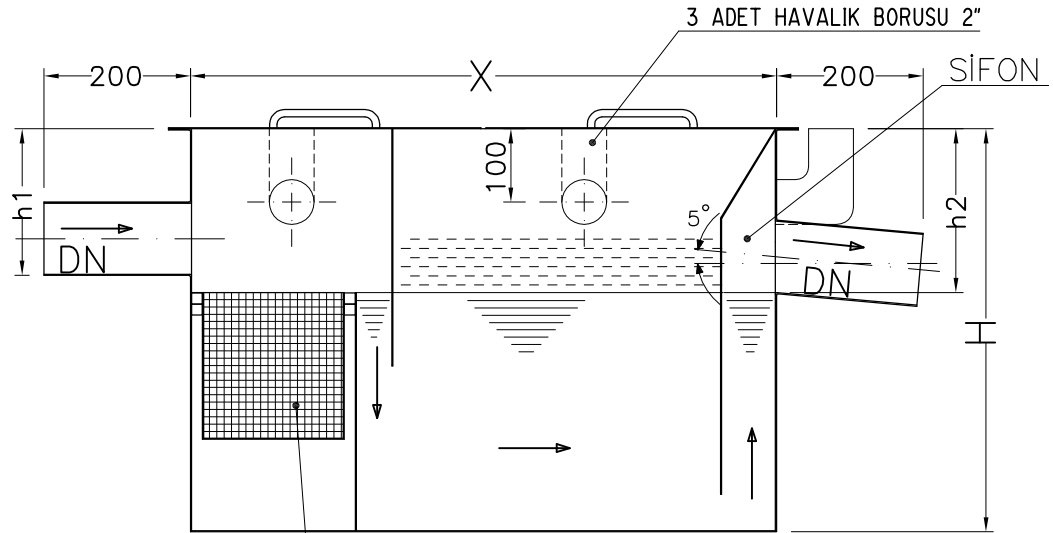
1/10

RESİM NO:
DWG. NO:

S900-D.DWG



PLAN



KESİT/SECTION

3 ŞEKİLDE ÜRETİLMEKTEDİR

- 1-SİYAH SAÇ + EPOKSİ BOYALI
- 2-SİYAH SAÇ + SICAK DALDIRMA GALVANİZLİ
- 3-316L PASLANMAZ SAÇTAN

PRODUCED IN 3 WAYS

- 1-SHEET METAL + EPOXY PAINTED
- 2-SHEET METAL + HOT DIP GALVANIZED
- 3-316L STAINLESS SHEET METAL

KESİT KALINLIĞI WALL THICKNESS mm.	KAPASİTE CAPACITY L/sn.	DN	X	Y	H	h1	h2	
DKP 3.0mm 316L 1.5mm	1.0	DN100	800	450	800	200	225	
	1.5	DN100	800	600	900	200	225	
	2.0	DN100	900	700	900	200	225	
	3.0	DN100	1200	850	900	200	225	
	4.0	DN125	1500	850	900	200	225	
DKP 4.0mm 316L 2.0mm	5.0	DN125	1500	900	1000	200	225	
	6.0	DN150	1750	900	1000	200	225	